

# PUBLIC HEALTH LEADERSHIP ACADEMY

## Session 1:

### *Overview of the Iowa Governmental Public Health System*

Erin Barkema & Marisa Roseberry, Iowa Department of Public Health



Midwestern Public  
Health Training Center



**IOWA**  
PUBLIC HEALTH

# About the Public Health Leadership Academy

## **PURPOSE:**

The Public Health Leadership Academy provides training and education to members of Boards of Health and Boards of Supervisors in Iowa

## **GOAL:**

To increase public health knowledge to better protect and improve the health of Iowans

# Public Health Leadership Academy: Planning Committee

Diane Anderson

Erin Barkema

Heather Bombei

Mark Campbell

Becky Nowachek

Kathy Preston

Patty Ritchie

Marisa Roseberry

Hannah Shultz

Erin Tabor

Mary Tarbox

Laurie Walkner

Jes Wegner

# Logistics

- Sessions every 7<sup>th</sup> Monday – 6:00-7:30 pm
  - *November 18<sup>th</sup>*
  - *January 6<sup>th</sup>*
  - *February 24<sup>th</sup>*
  - *April 13<sup>th</sup>*
  - *June 1<sup>st</sup>*
  - *July 20<sup>th</sup>*
- Edited Zoom recording + slides + any supplemental materials will be posted to **[iowaphla.com](http://iowaphla.com)** after the session
- Evaluation will be sent after each session – please give us feedback!

# WHAT BOARD(S) DO YOU SERVE ON?

Go to Poll Everywhere ([PollEv.com/publichealth396](https://PollEv.com/publichealth396))  
on your computer or smartphone browser, then type your response  
OR text PUBLICHEALTH396 to 37607 once to join, then text your message

# HOW LONG HAVE YOU BEEN A BOARD MEMBER?

Go to Poll Everywhere ([PollEv.com/publichealth396](https://PollEv.com/publichealth396))  
on your computer or smartphone browser, then type your response  
OR text PUBLICHEALTH396 to 37607 once to join, then text your message

# SESSION OVERVIEW

- Welcome
- What is Public Health?
- History
- Structure
  - Local Boards of Health
  - Core Functions & 10 Essential Services
  - Recognized Public Health Agencies
  - Local Boards of Supervisors
  - State Board of Health
  - Iowa Department of Public Health
  - State Hygienic Lab
- Public Health Modernization
- Questions

# SESSION 1

## GOALS + OBJECTIVES

### Learning Goal:

- Participants will gain knowledge of Iowa's public health system, and the roles and responsibilities of its members of Boards of Health and Boards of Supervisors.

### Objectives:

- Explain ways local and state health departments and boards work collectively to impact the health of Iowans
- Describe the Core Functions & 10 Essential Public Health Services
- Recognize the importance of public health modernization



# Welcome



**Gerd Clabaugh** – Director, Iowa Department of Public Health

<https://www.youtube.com/watch?v=bqHqKLtrSCA&feature=youtu.be>

# WHAT IS PUBLIC HEALTH?

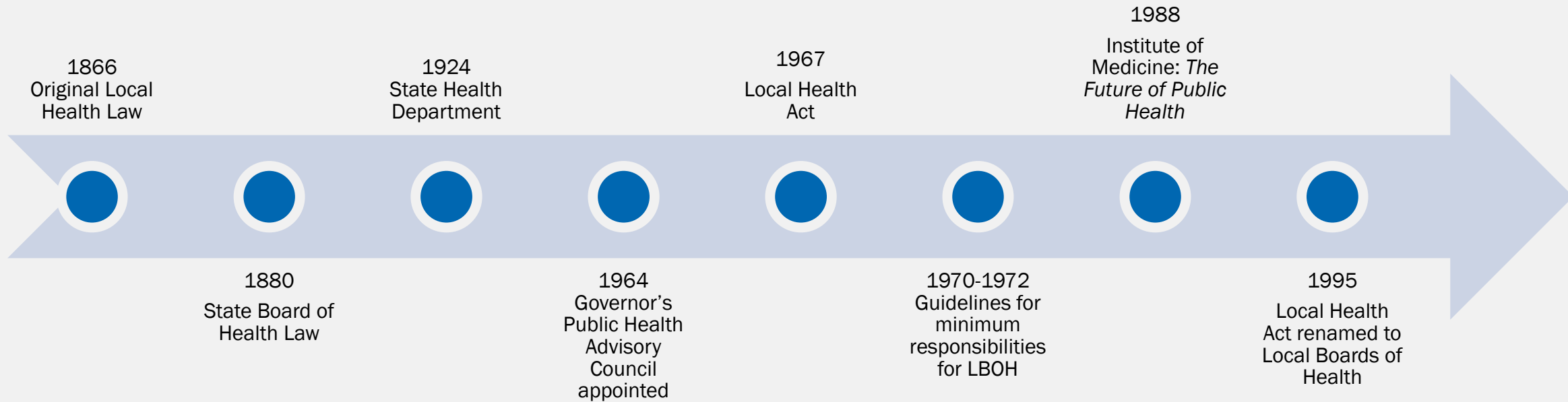
Go to Poll Everywhere ([PollEv.com/publichealth396](https://www.poll Everywhere.com/publichealth396))  
on your computer or smartphone browser, then type your response  
OR text **PUBLICHEALTH396** to **37607** once to join, then text your message

# What is Public Health?

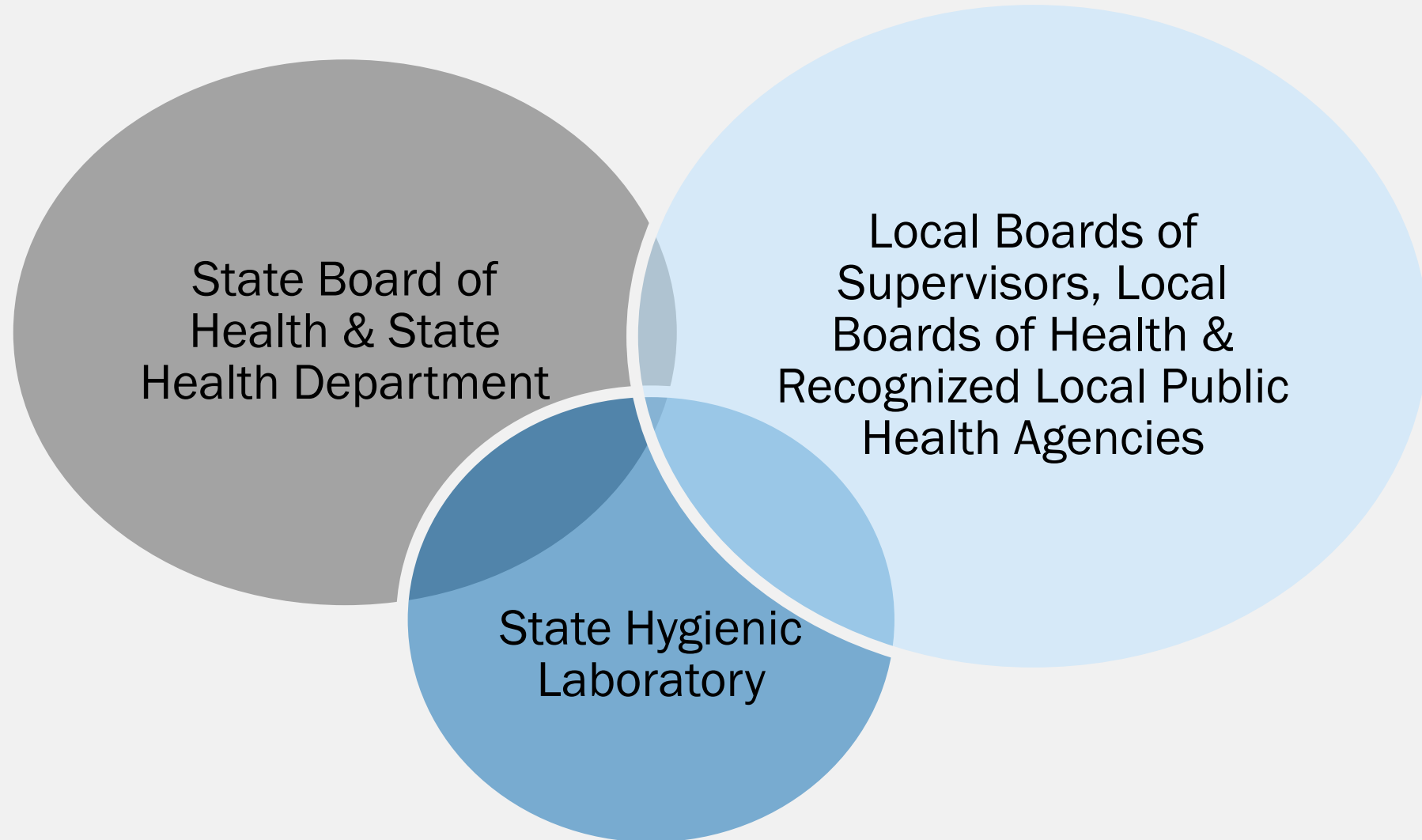


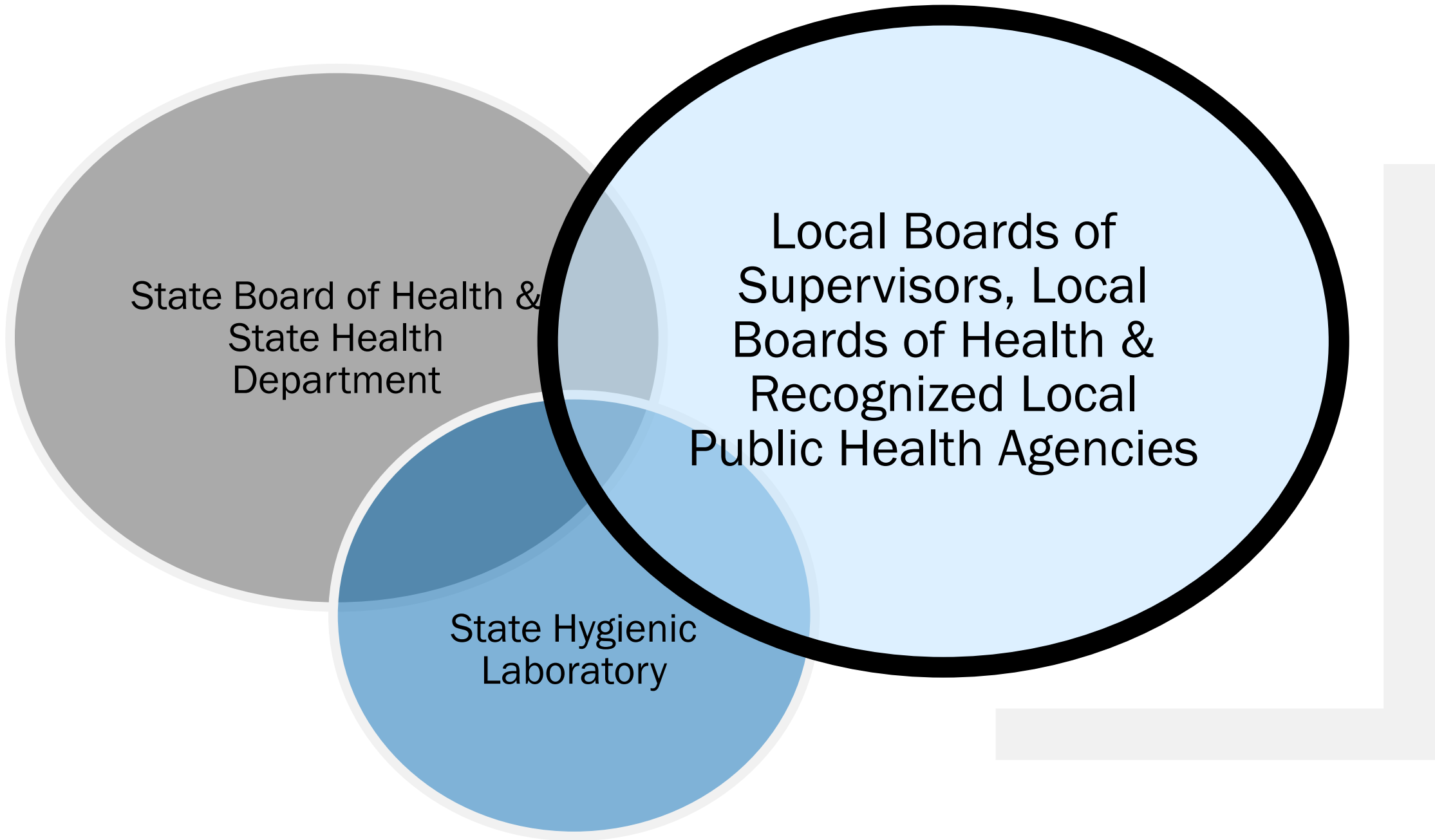
LET'S MAKE  
**OUR NATION**

# History



# Iowa's Governmental Public Health System





State Board of Health &  
State Health  
Department

State Hygienic  
Laboratory

Local Boards of  
Supervisors, Local  
Boards of Health &  
Recognized Local  
Public Health Agencies

# Local Boards of Health

## Decentralized

- Ninety-nine (99) county Boards of Health
- One (1) city Board of Health

## Membership and Meetings

- Each local Board of Health consists of at least five (5) members including one (1) licensed physician
- Members appointed by county Board of Supervisors – three (3) year term
- Meet at least six (6) times per year

# Local Boards of Health

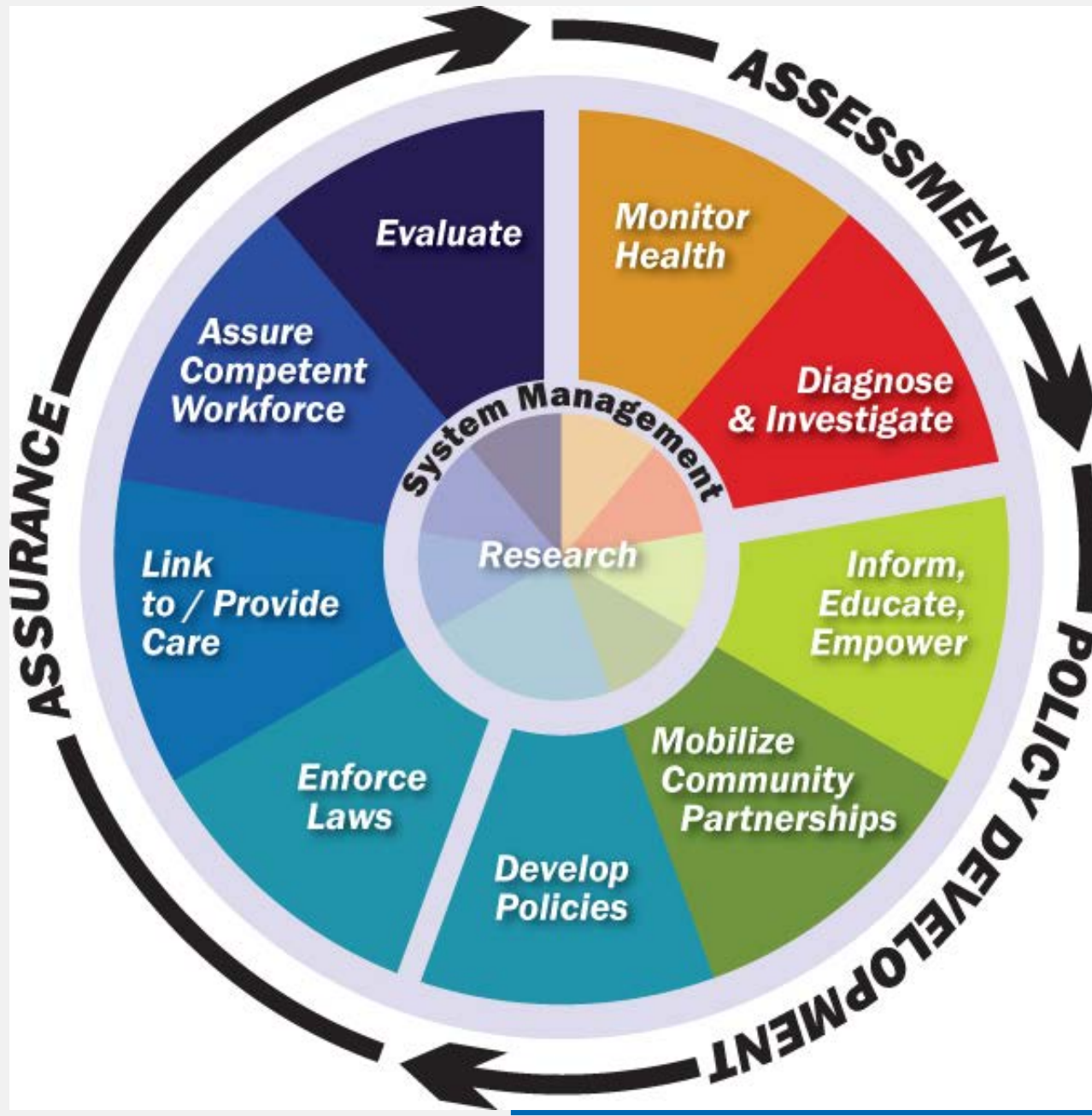
## Purpose

*“Jurisdiction over public health matters within its designated geographic area”*

Iowa Code Chapter 137

- Serve as the contractor for state and local funds
  
- Responsible for safeguarding the community’s health. This goal is pursued through three core functions:
  - Assessment
  - Policy development
  - Assurance





# CORE FUNCTIONS & 10 ESSENTIAL PUBLIC HEALTH SERVICES

# Core Functions & the 10 Essential Services

## Assessment

Monitor health status to identify community health problems

Diagnose and investigate health problems and health hazards in the community



# Core Functions & the 10 Essential Services

## Policy Development

Inform, educate, and empower people about health issues

Mobilize community partnerships to identify and solve health problems

Develop policies and plans that support individual and community health efforts



# Core Functions & the 10 Essential Services

## Assurance

Enforce laws and regulations that protect public health and enforce lawful orders of the department

Link people to health services; provide personal, population-based and environmental health services; and charge reasonable fees for personal health services

Assure the competence of the public health, environmental health, and personal health care workforce

Evaluate effectiveness, accessibility, and quality of personal, population-based, and environmental health services







# Local Boards of Health & Local Public Health Agencies

To address the core public health functions, local Boards of Health can:

- Employ persons as necessary for the efficient discharge of its duties;
- Engage in joint operations by contracting with colleges and universities, the state department, other public, private, and nonprofit agencies and individuals to provide personal and population-based public health services; or
- Form a district health department to provide personal and population-based public health services.

# Recognized Local Public Health Agencies

*“If you’ve seen one health department in Iowa, you’ve seen one health department.”*

## ■ Types of Agencies

- **County based:** governed by the local Board of Health
- **Health system-based:** governed by Board of Trustees or Board of Directors
- **Other:** governed by Board of Directors

## ■ Structure

- One county department
- Two or more county departments
- Board of Health subcontracts services

## ■ Staffing

- Number of staff vary in size based on services provided

# Local Board of Health - Roles

## Board of Health Members

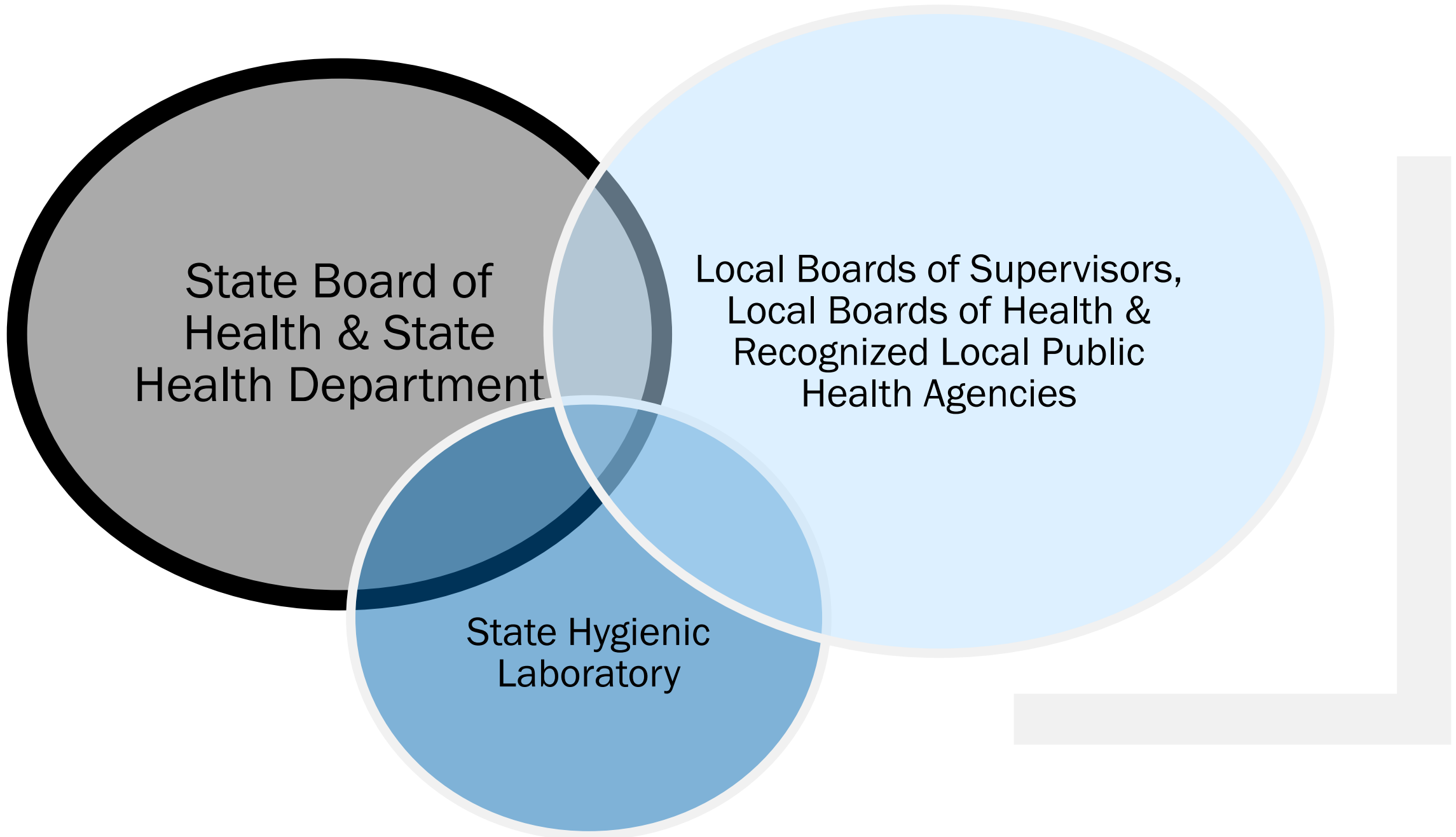
- Volunteers who represent the community in public health decision-making processes
- Commit to safeguarding the health of the community
- Attend Board of Health meetings regularly – necessary to conduct business
- Share necessary information and resources with the community – spread a wide net



# Local Boards of Supervisors

## Board of Supervisor Members

- Support the local Board of Health and the recognized public health agency
  - Appoint Board of Health members
    - Process is identified in Board of Health policies
    - A supervisor may serve on the Board of Health (Dual role – LBOH/BOS or Board of Health Liaison)
  - Allocate county tax dollars to meet the county's public health needs
- Approve adopted rules and regulations of the Board of Health



State Board of  
Health & State  
Health Department

Local Boards of Supervisors,  
Local Boards of Health &  
Recognized Local Public  
Health Agencies

State Hygienic  
Laboratory

# State Board of Health

## Purpose

- Policy-making body for the Iowa Department of Public Health
- State Board of Health has powers and duties to adopt, promulgate, amend and repeal rules and regulations and advises or makes recommendations to the Governor, General Assembly, and the Director of Public Health, on public health, hygiene, and sanitation

## Board Profile

<b>Board or Commission Name</b> <a href="#">State Board of Health</a>		<b>Department or Agency</b> <a href="#">Public Health, Department of</a>	
<b>Location of Board Meetings</b> Lucas State Office Building 321 E. 12th St. Des Moines, Iowa 50319		<b>Normal Meeting Schedule</b> 7-8 times per year	<b>Normal Meeting Time</b> 1-2 hours
<b>Total Board Members</b> 11	<b>Governor Appointed</b> 11	<b>Vacant Appointments</b> 0	<b>Term Length</b> 3 Years
<b>Organizational Authority</b> 136.1			

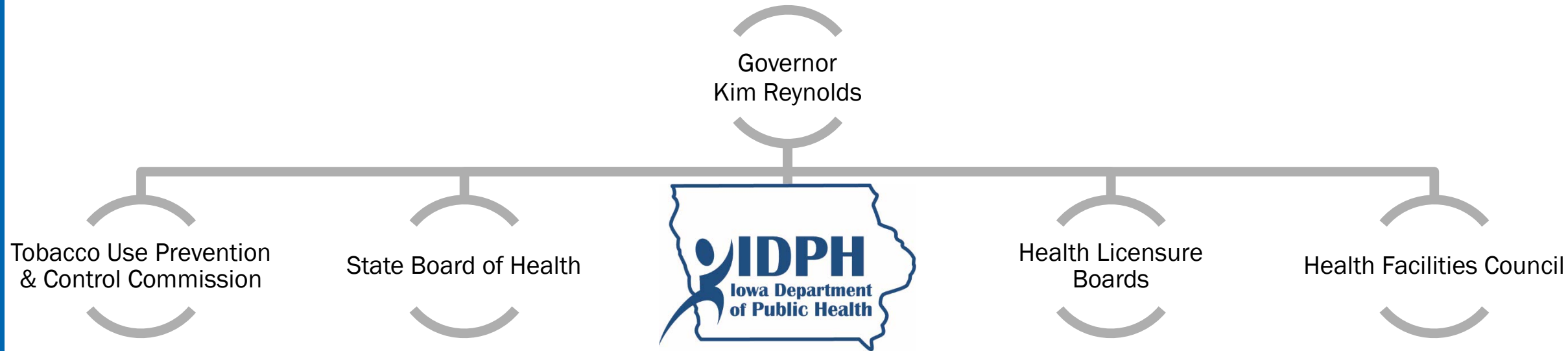
## Board Members

[Apply To This Board](#)

Member Name	City	County	Position	Term Begin	Term End↓	Gender	Party	Status
<a href="#">Christopher Atchison</a>	IOWA CITY	JOHNSON	Public Health	07/01/2017	06/30/2020	Male	Rep	A
<a href="#">Laura Beeck</a>	Denison	CRAWFORD	Public Health	07/13/2017	06/30/2020	Female	None	A
<a href="#">Kierstyn Borg Mickelson</a>	Ankeny	POLK	Public Member	07/01/2017	06/30/2020	Female	Rep	A
<a href="#">Jay Hansen</a>	Mason City	CERRO GORDO	Substance Abuse Treatment	07/01/2018	06/30/2021	Male	Dem	A
<a href="#">Karie Foster</a>	Pella	MARION	Public Member	07/01/2018	06/30/2021	Female	Dem	A
<a href="#">Vickie Lewis</a>	Marshalltown	MARSHALL	Substance Abuse Prevention	07/01/2018	06/30/2021	Female	Dem	A
<a href="#">Jason Harrington</a>	Spirit Lake	DICKINSON	Public Health	07/01/2018	06/30/2021	Male	Rep	A
<a href="#">Leone Junck</a>	Ogden	BOONE	Public Member	08/20/2019	06/30/2022	Female	Rep	A
<a href="#">Michael Wolnerman</a>	Des Moines	POLK	Health - Pharmacist	07/01/2019	06/30/2022	Male	Rep	A
<a href="#">Patti Brown</a>	WAUKEE	DALLAS	Public Member	07/01/2019	06/30/2022	Female	Rep	A
<a href="#">George Kovach</a>	Le Claire	SCOTT	Health- MD	08/20/2019	06/30/2022	Male	None	A

Status  
 A = Active  
 V = Vacant

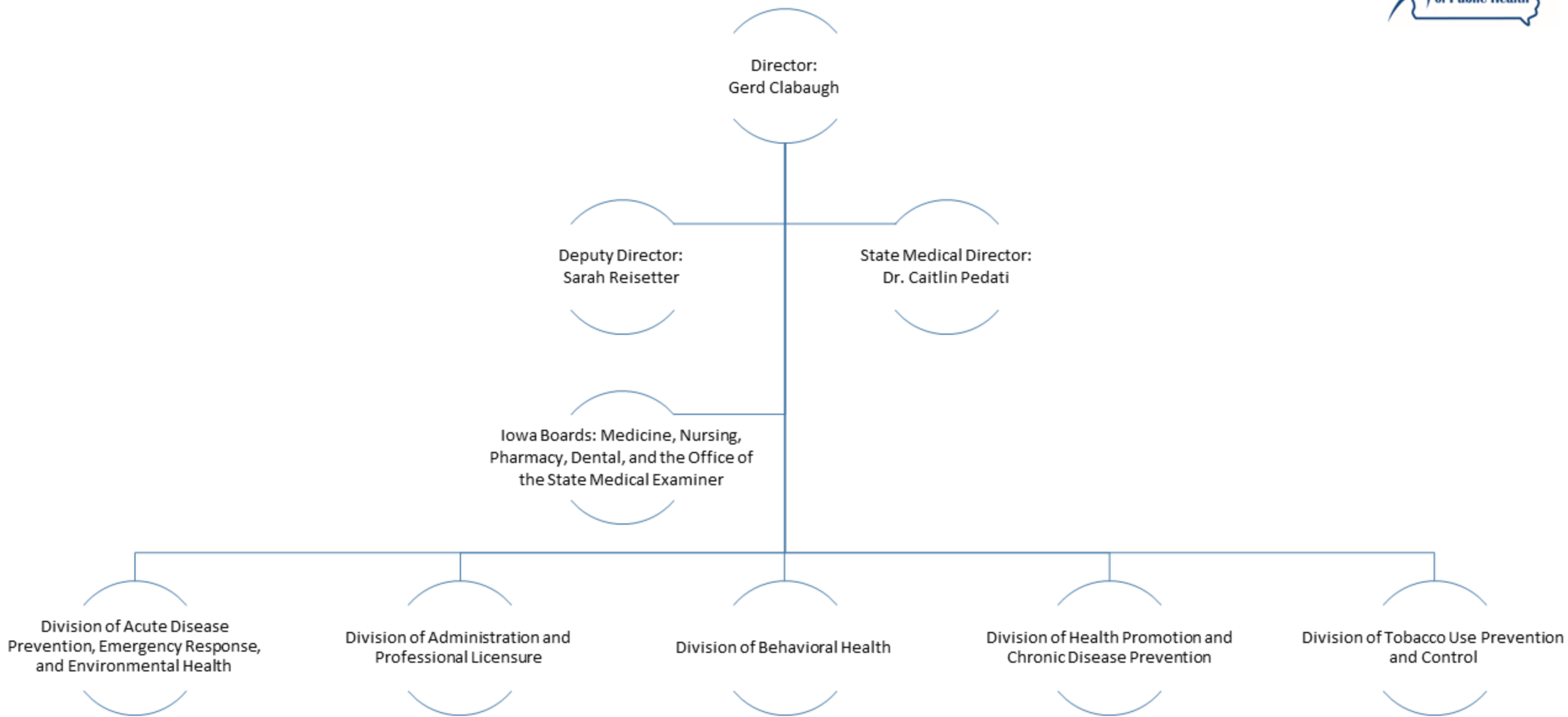
# State Structure



# IN WHAT WAYS HAVE YOU INTERACTED WITH IDPH?

Go to Poll Everywhere ([PollEv.com/publichealth396](https://www.poll Everywhere.com/publichealth396)) on your computer or smartphone browser, then type your response OR text PUBLICHEALTH396 to 37607 once to join, then text your message

# Iowa Department of Public Health



# Iowa Department of Public Health: Areas of Practice

**Vision for Iowa:** Healthy Iowans in Healthy Communities.

**Mission:** Protecting and Improving the Health of Iowans.

**Vision for IDPH:** Iowa's Leader for Population Health





# IDPH Guiding Principles

- *ACCOUNTABILITY:* We act with integrity and strive for fairness in all we do.
- *COLLABORATION/TEAMWORK:* We value internal and external partnerships, and remain flexible to new and diverse ideas.
- *COMMUNICATION:* We use timely, effective, and open dialogue to increase collaboration and participation in protecting and improving health.
- *HEALTH EQUITY:* We promote health for all by working to reduce health disparities and focusing on health where people live, learn, work, and play.
- *QUALITY:* We are dedicated to efficiency, effectiveness, and the continuous improvement of our processes and services.
- *RESULTS ORIENTED:* We strive for excellence through decision-making that is priority-focused, data-driven, and evidence-based.
- *WORKFORCE DEVELOPMENT:* We continually work to develop the skills and competencies of our workforce.

State Board of  
Health & State  
Health Department

Local Boards of Supervisors,  
Local Boards of Health &  
Recognized Local Public  
Health Agencies

State Hygienic  
Laboratory

## Keeping Iowans Healthy: State Hygienic Laboratory at the University of Iowa



<https://www.youtube.com/watch?v=HRgp0XhT2zo>

# Iowa State Hygienic Laboratory History

- **1904:** Established by legislature as a part of the Department of Pathology and Bacteriology at the State University of Iowa.
- **Fall 1904:** 677 culture stations set up across Iowa.
  - *Held specimen collection kits for typhoid, diphtheria, and TB, samples mailed to Iowa City by local physicians*
- **1914:** Water lab added *“in the interest of public health and for the purpose of preventing epidemics of disease.”*
- **1970s/1980s:** Introduced testing for new diseases, including Lyme Disease, Legionnaire's Disease, and HIV.
- **1982:** Designated as Iowa's central Newborn Screening Lab for metabolic diseases.
- **1990's-2000's:** SHL continues to respond to new disease outbreaks, including hantavirus, West Nile Virus, Lyme Disease, Ebola, SARS, MERS, H1N1 influenza, and Zika Virus.

# Iowa State Hygienic Laboratory Services

**Purpose:** SHL provides laboratory testing to protect the health of Iowans.

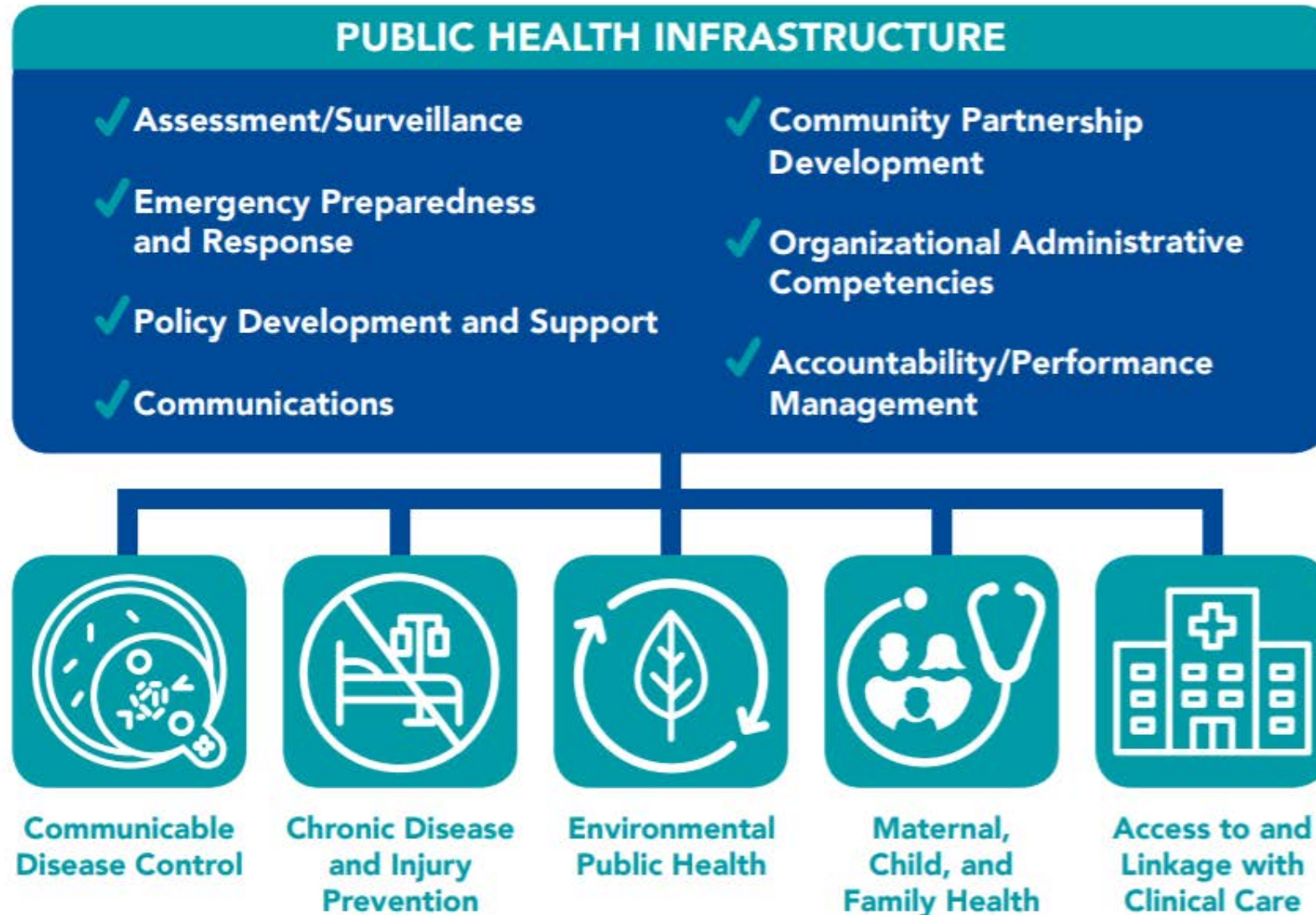
- Environmental testing
- Clinical testing
- Food safety testing
- Emergency preparedness to respond to chemical and bioterrorism events.

# Improving Public Health

## Public Health Modernization

- Focuses on making sure the governmental public health system is the best it can be to have the greatest impact on the health of Iowans
  - Foundational Capabilities and Services
  - Performance Management
  - Quality Improvement
  - Chief Health Strategist
  - PHAB Accreditation
- Includes gathering and sharing data that describes the public health system
- Public health fund established to support the work at the state and local level

# Foundational Capabilities



# Summary

- History
- Local Boards of Health
- Recognized Public Health Agencies
- Local Boards of Supervisors
- State Board of Health
- Iowa Department of Public Health
- State Hygienic Lab
- Public Health Modernization



*Questions?*

